



LIFTER DANMARK

Handels- og Ingeniørfirma ApS
Axel Kiers Vej 8 B
8270 Højbjerg
Tlf.: 86 72 22 88 ; mail: post@lifterdanmark.dk
www.lifterdanmark.dk

TORROS

JUMBO RULLEHÅNDTERING OP TIL 500 KG



FOR 76 OG 152 mm KERNE

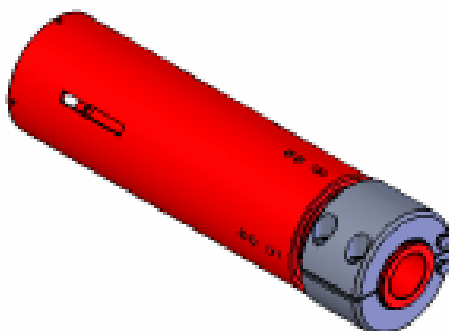
Fuldautomatisk gribe-, løfte- og vendefunktion

Designet til rotation af store ruller. TORROS's EX500 gør det let at håndtere store ruller: Med elektrisk ekspander, elektrisk rotation, elektrisk løft og elektrisk kørsel, er der intet manuelt arbejde. EX500 håndterer 500 kg's ruller med 76mm eller 152mm kernedia. Hvis nødvendigt kan dornen udskiftes med standard gafler på 5 minutter. EX500 er designet og bygget af TORROS.



Quick skift 76 og 152 mm dorn.

Skiftet involverer kun 2 bolte og 2 elektriske forbindelser



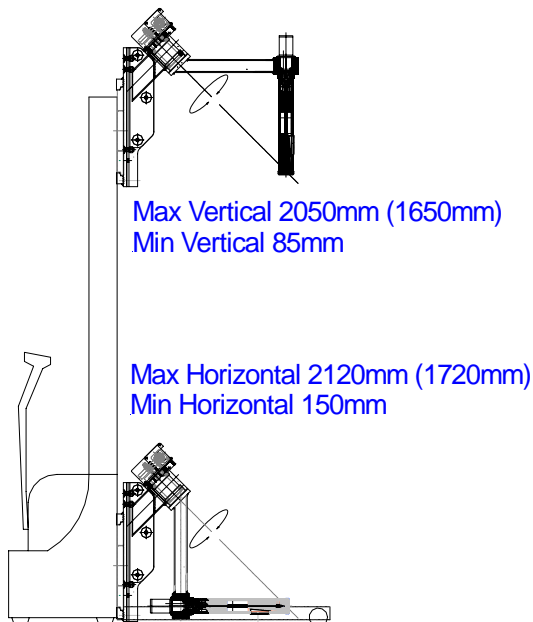
Anvendelse



TORROS EX 500 with Jungheinrich Swift Specification

- EX500 Construction: Most of the parts are Electro Magnetic Plated steel.
- Limit Switches (to stop the lift at the top and the bottom,) Controls and Battery Indicator all use IP67 Water Resistance components.
- Side Shift is manual, running on 2 x Rexroth Linear Rails. Travel is +/-50mm from center
- EX500 can be removed and replaced with standard Forks in 5 minutes.
- Hand Held Controls on spiral cable for easy use
- E-Stop for safety and On/Off control.
- 24v Curtis Instruments PLC with Soft Start drive for great control and care and overload protection
- Current draw: very low: Motor 1 limited to 5.5Amps / Motor 2 to 20 Amps. Each runs for approx 30 secs per operation.
- Grip has automatic Alarm to signal when the Grips is secure
- Grip Release requires pushing two buttons at the same time (for safety.)
- Uses the same batteries as the Swift
- Rotation of the arm is limited to 200 degrees so that the cables cannot become wrapped up and broken
- Cables are on Multiplugs for easy removal of the EX500 from the Swift
- EX500 can be replaced with forks in about 5 minutes.
- Max Straddle 1370mm (Leg ID)
- Weight about 90kg
- Max Reel Weight 500kg
- Max Reel diameter 800mm
- Max reel width 800mm
- Other Reel dimensions are possible for specials
-

Dimensions are for 2370mm Swift
(Dimension in brackets are for 1970mm)



LIFTER DANMARK APS

Axel Kiers Vej 8b, 8270 Højbjerg

T: +45 8672 2288

F: +45 8629 3211

E: post@lifterdanmark.dk

www.lifterdanmark.dk